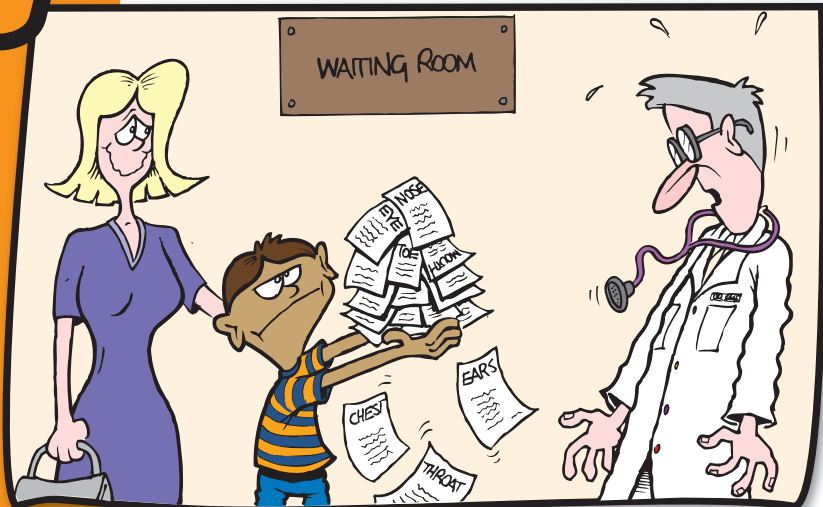
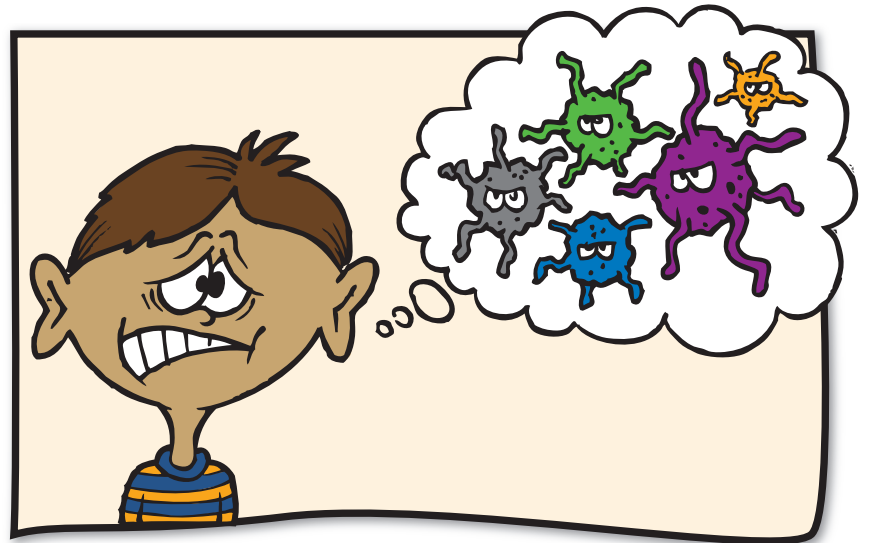


# 7 Warning Signs

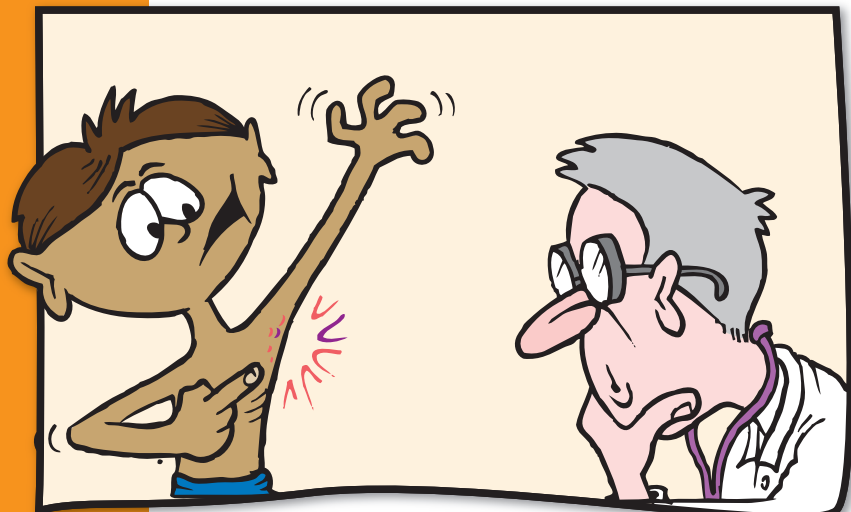
When to suspect primary immune deficiency



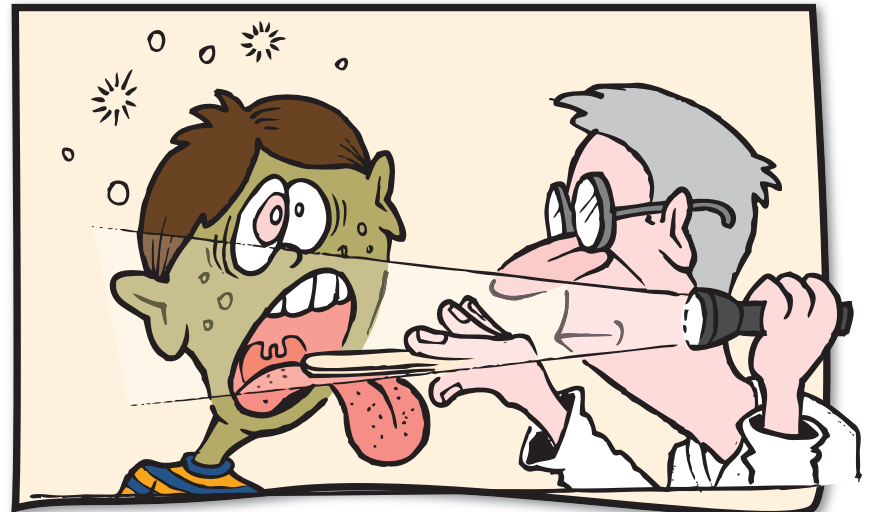
An unusually large number of infections requiring treatment



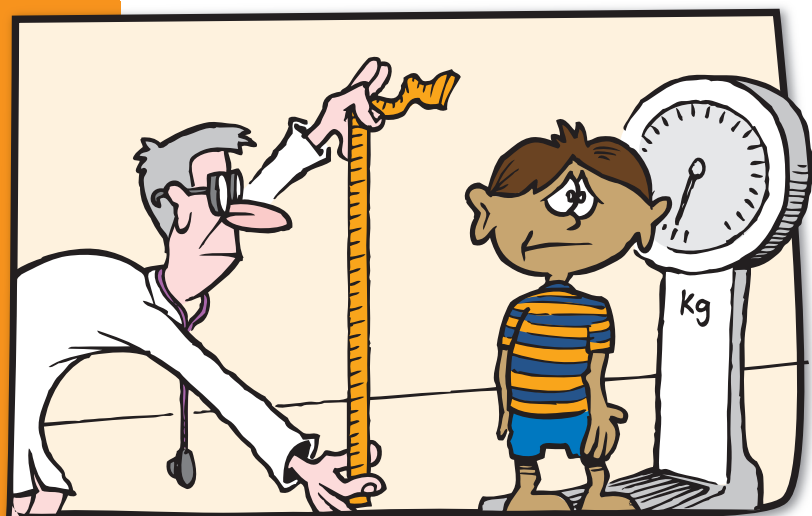
Infections caused by unusual types of organisms



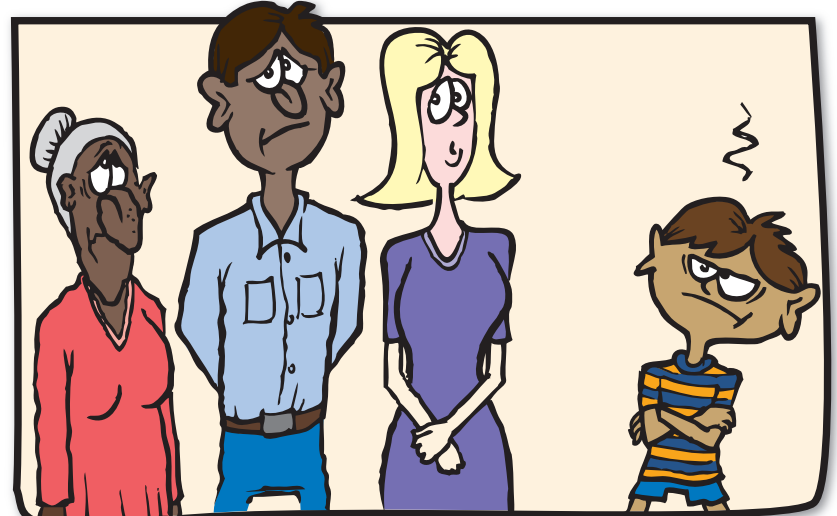
Infections in unusual places



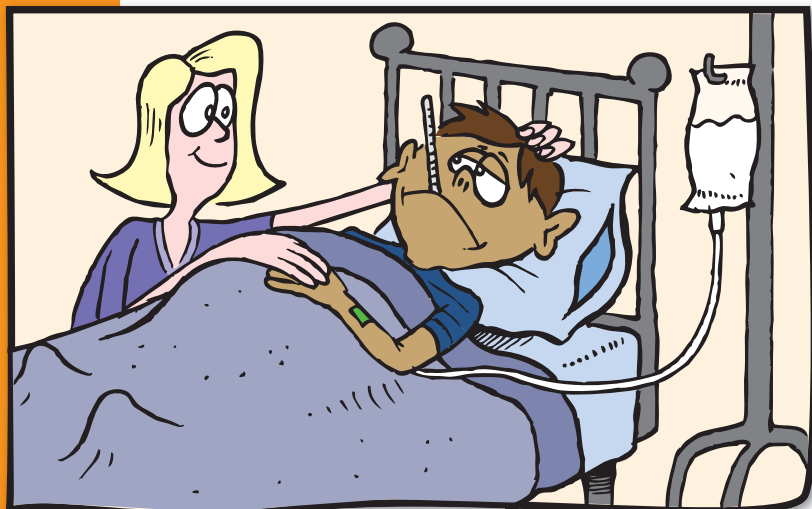
Infections that do not respond to treatment as expected



A child that does not grow, or put on weight as expected



Family history of an immune deficiency or abnormal infections



Any other unusual symptoms related to infections

## International office:

PO Box 75076  
Manurewa  
Auckland  
New Zealand

Website: [www.idfnz.org.nz](http://www.idfnz.org.nz)  
Email: [info@idfapa.org](mailto:info@idfapa.org)



Immune Deficiencies Foundation  
Asia Pacific Alliance

Any infection needs medical attention so please see your doctor if you or your child is unwell, has any of the above signs or if you have any other concerns with ongoing infections